

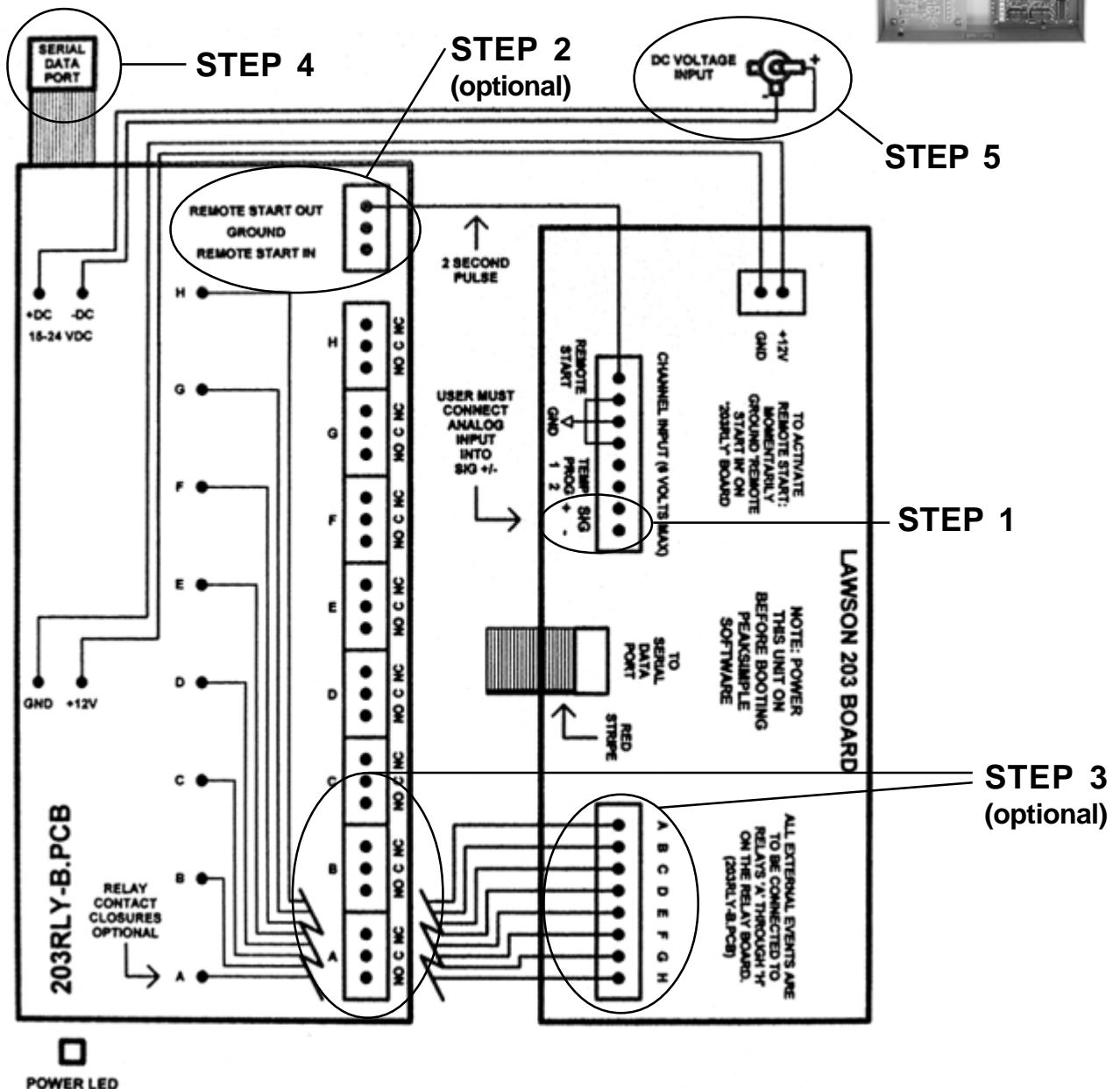
# Quick Start

## Model 203 Single Channel PeakSimple Data System

The Model 203 may be used with any brand or model of GC or HPLC offering an analog detector output signal ranging from 0-5V. It includes two independent, programmable controls (0-5V analog output) for temperature & pressure or HPLC gradient formation. A remote start input compatible with 2-wire switch closures (typically output by GCs and HPLCs as a remote start signal) is also included for your optional use.

### Open the Model 203

Verify that the Model 203 is not plugged into a wall socket and is therefore powered OFF (no power switch). Remove the thumbscrews on both sides of the Model 203 box and slide the top cover up and off. It is connected to the bottom of the box by the ground wire, so just set it next to the bottom half of the box. There is a wiring diagram of the Model 203 circuit boards and all wiring connections on the inside of the top cover. Use this wiring diagram (shown below) to complete steps 1-5 as described on the following pages.

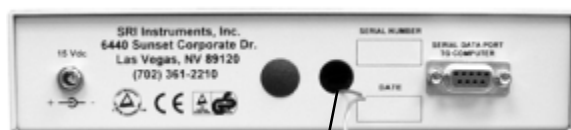


# Quick Start

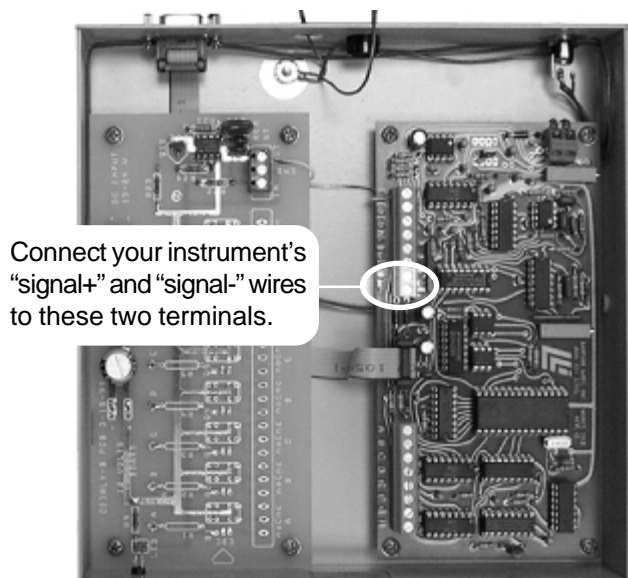
## Model 203 Single Channel PeakSimple Data System

### STEP 1: Connect the Analog Signal Cable

- 1-1. Route the analog signal cable from your instrument through the open hole in the back of the Model 203.
- 1-2. Strip 1/4" of insulation from the "signal+" and "signal-" wires of your instrument's signal cable.



Route wires through this hole



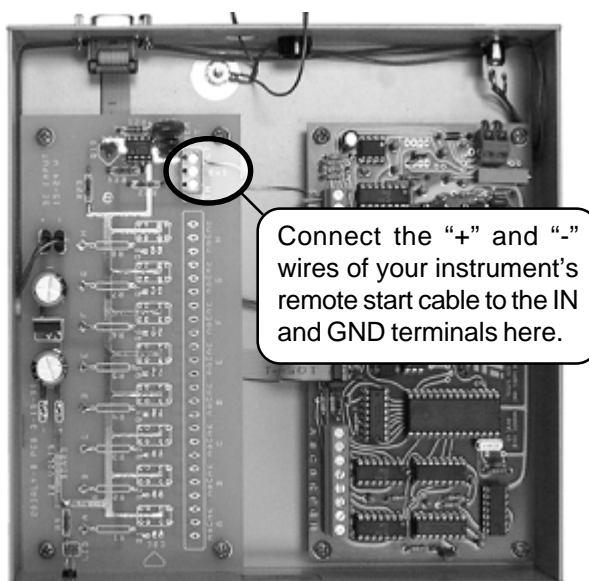
Connect your instrument's "signal+" and "signal-" wires to these two terminals.

- 1-3. Insert "signal+" into the Lawson 203 board screw terminal marked "signal+" and secure the connection with a small flat-blade screwdriver.
- 1-4. Insert "signal-" into the Lawson 203 board screw terminal marked "signal-" and secure the connection.

### STEP 2: (OPTIONAL) Connect the Remote Start Cable

The Model 203 remote start capability allows you to start the data system by means of a switch closure. In some applications, the chromatograph being used with the Model 203 may offer a remote start signal output or switch closure output that permits starting an integrator or other device when the START button is pressed on the chromatograph's on-board control panel. Typically, this signal can be used to start the Model 203.

- 2-1. Route the remote start cable from your instrument through the open hole in the back of the Model 203.
- 2-2. Strip 1/4" of insulation from the "+" and "-" wires of your remote start cable.
- 2-3. Insert the "+" wire into the 203RLY board screw terminal marked "IN" and secure the connection.
- 2-4. Insert the "-" wire into the 203RLY board screw terminal marked "GND" and secure the connection.



Connect the "+" and "-" wires of your instrument's remote start cable to the IN and GND terminals here.

**Replace the Model 203 cover and secure it with the thumbscrews.**

# Quick Start

## Model 203 Single Channel PeakSimple Data System

### STEP 3: Connect the Serial Cable to Your Computer

The Model 203 is equipped with a RS-232 serial port. A DB-9 type serial cable (provided) connects the Model 203 to your Windows™ computer through the PC's COM port. This simple interface permits the Model 203 to be operated from a desktop or laptop computer.



DC power input

RS-232 serial port

3-1. Secure one end of the serial cable to an available COM port on your PC.

3-2. Secure the other end to the RS-232 serial port on the back of the Model 203.

Serial cable (DB-9 type)



COM 1

### STEP 4: Connect Power to the Model 203

Model 203 units are provided with a 15 V DC power supply which plugs into a standard wall volt outlet. Plug the power supply output plug into the back of the Model 203 and plug the power supply into the wall outlet. Verify that the POWER LED on the front of the Model 203 is lit.

POWER LED



15 V DC  
power supply

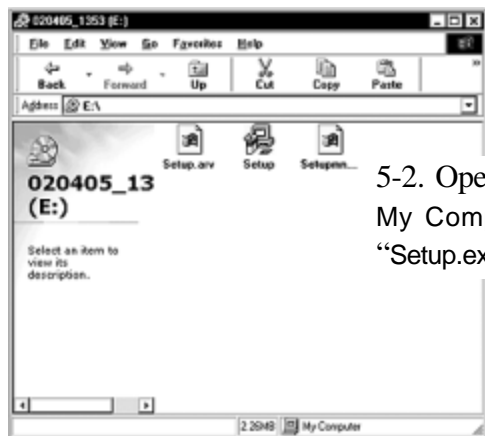


# Quick Start

## Model 203 Single Channel PeakSimple Data System

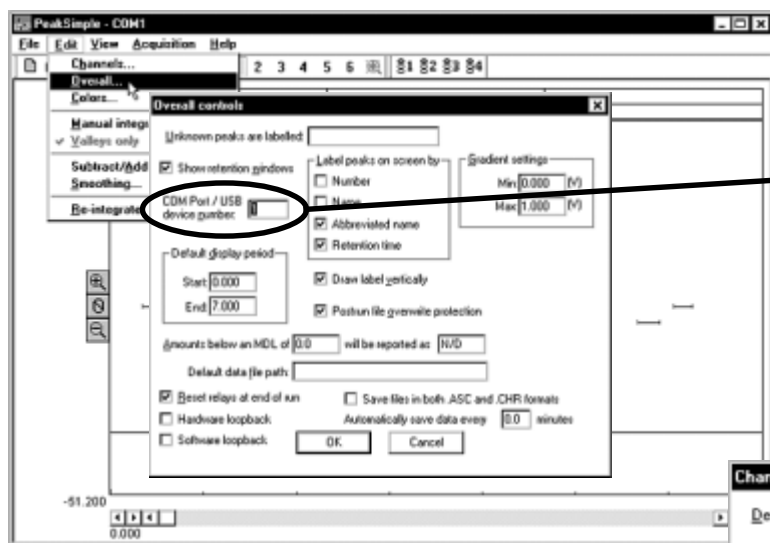
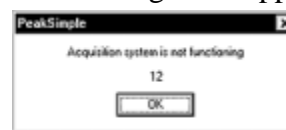
### STEP 5: Install PeakSimple Chromatography Software

5-1. Locate your copy of the PeakSimple software, which is shipped inside the front cover of your SRI manual. Insert the CD or floppy disk(s) into your computer's appropriate drive.



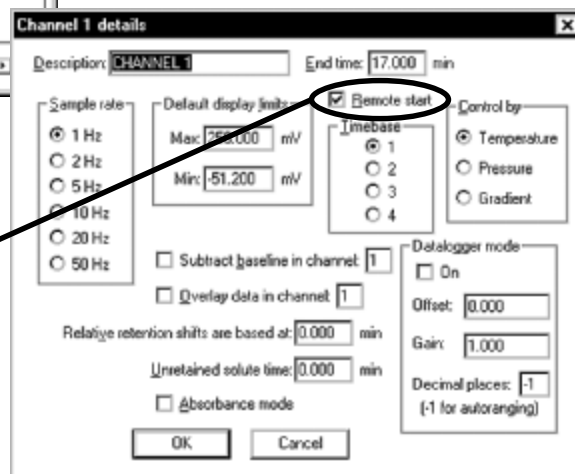
5-2. Open the appropriate drive through My Computer, then double click on "Setup.exe" and follow the instructions.

5-3. Double-click on the PeakSimple icon to launch the program. Verify that communication has been established between your computer and the Model 203. An error message will appear if communication is not established.



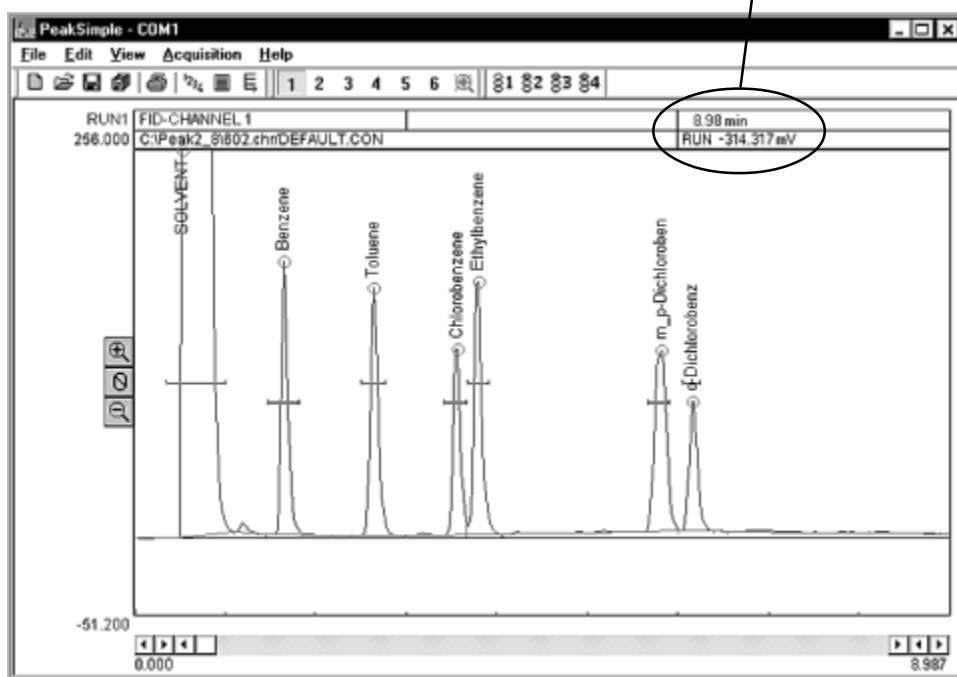
5-4. PeakSimple defaults to COM 1. If you did not connect the Model 203 to COM 1, you will get the error message. Open the Edit menu and choose Overall. In the dialog box that appears, enter the number of the COM port to which you have connected the Model 203. If you do not know the number of the COM port to which you connected the 203, use the process of elimination: try different numbers until you find one that works.

5-5. For the remote start option: Open the Edit menu and choose Channels. Click on the Details button for channel 1. Verify that Remote start is enabled (the box should be checked).



## STEP 6: Starting an Analysis

6-1. The upper right corner of the PeakSimple chromatogram window contains real-time information pertinent to your analysis in progress. The status of the run (RUN, STAND BY) is displayed in capital letters next to the millivolt (mV) reading, underneath the amount of time into the run.



6-2. Hit your computer keyboard spacebar to begin the run, and the data is plotted onscreen in the chromatogram window.

6-3. Hit the End key on your computer keyboard to stop the run.

### More on PeakSimple:

This Quick Start guide presents a very brief introduction to PeakSimple. There are tutorials in the manual and online at [www.srigc.com](http://www.srigc.com) (click on the "Download Our Documents" button) that will acquaint you with PeakSimple's basic functions.

If you have questions or problems, call SRI for free technical support at 310-214-5092, 8am - 5pm California time.