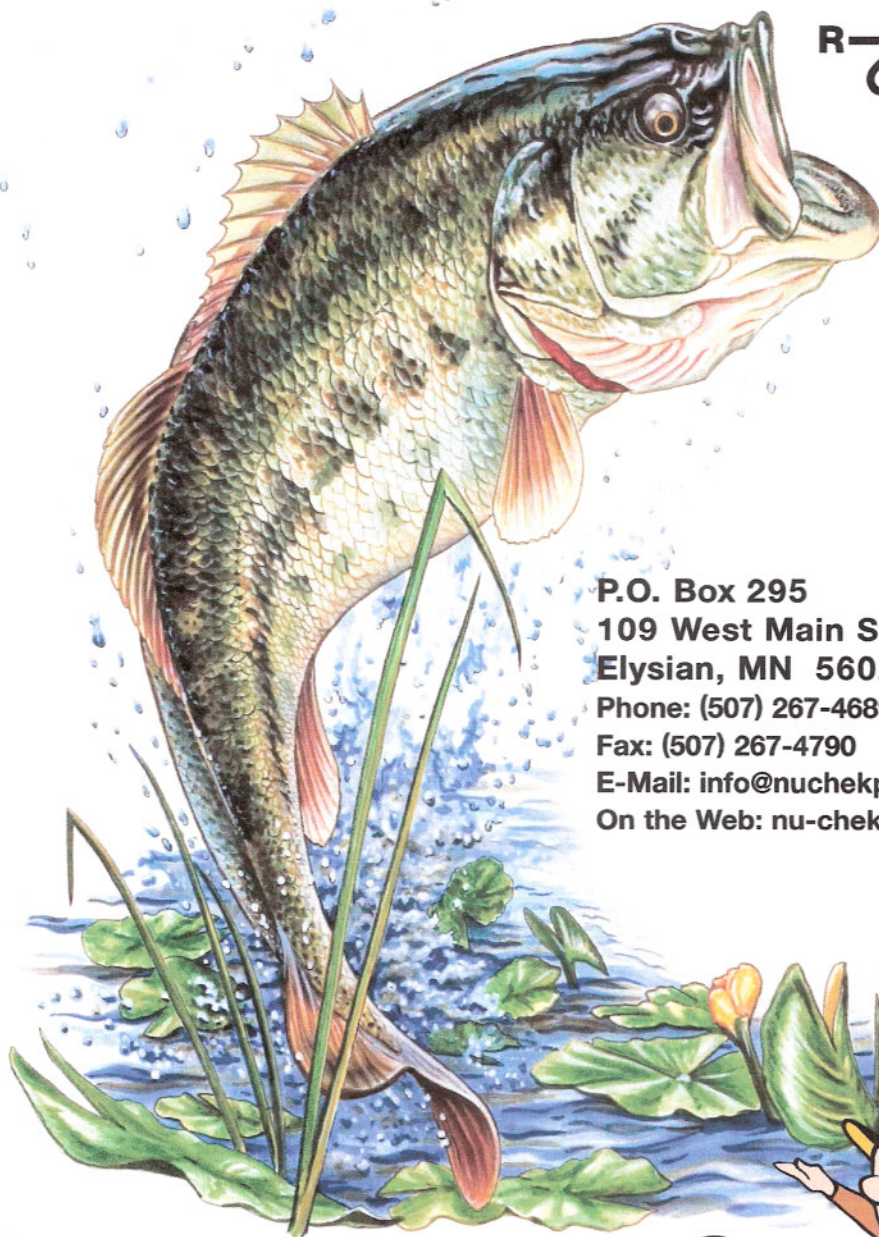
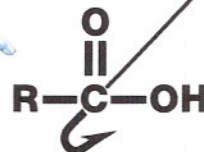


NU-CHEK PREP, INC.

*The Home of
Fine Lipid Organics*



1970 - 2015

45

YEARS OF
EXCELLENCE

P.O. Box 295
109 West Main St.,
Elysian, MN 56028 U.S.A.
Phone: (507) 267-4689 or (507) 267-4582
Fax: (507) 267-4790
E-Mail: info@nuchekprep.com
On the Web: nu-chekprep.com

2015-2017



GLC REFERENCE STANDARDS (Continued)

CHAIN	ITEM	CODE NO.	% BY WT.		PRICE/100MG			
C14:0	METHYL MYRISTATE			1.0				
C16:0	METHYL PALMITATE			10.0				
C18:0	METHYL STEARATE			6.0				
C18:1	METHYL OLEATE			25.0				
C18:1T	METHYL ELAIDATE			20.0				
C18:2	METHYL LINOLEATE	GLC-67		34.0			\$50.00	
C18:2TT	METHYL LINOELAIDATE			2.0				
C18:3	METHYL ALPHA LINOLENATE			1.0				
C20:0	METHYL ARACHIDATE			0.5				
C22:0	METHYL BEHENATE			0.5				
			A	B	C	D	E	F
C8:0	METHYL OCTANOATE		—	—	2.0	—	—	—
C10:0	METHYL DECANOATE		—	—	3.0	—	—	—
C12:0	METHYL LAURATE		—	—	4.0	—	—	—
C14:0	METHYL MYRISTATE		5.0	3.0	3.0	6.0	4.0	6.0
C14:1	METHYL MYRISTOLEATE		5.0	1.0	1.0	1.0	1.0	1.0
C16:0	METHYL PALMITATE		10.0	10.0	10.0	16.0	18.0	15.0
C16:1	METHYL PALMITOLEATE		5.0	2.0	2.0	5.0	5.0	8.0
C18:0	METHYL STEARATE		5.0	15.0	15.0	8.0	6.0	3.0
C18:1	METHYL OLEATE		5.0	25.0	16.0	13.0	12.0	10.0
C18:1	METHYL VACCENATE		—	—	—	4.0	2.0	3.0
C18:2	METHYL LINOLEATE		5.0	10.0	10.0	2.0	2.0	2.0
C18:3	METHYL ALPHA LINOLENATE		5.0	4.0	4.0	2.0	1.0	1.0
C20:0	METHYL ARACHIDATE		5.0	2.0	2.0	1.0	1.0	—
C20:1	METHYL 11-EICOSENOATE		5.0	2.0	2.0	9.0	4.0	14.0
C20:2	METHYL 11-14-EICOSADIENOATE		5.0	2.0	2.0	1.0	1.0	1.0
C20:3	METHYL HOMOGAMMA LINOLENATE		5.0	4.0	4.0	—	—	—
C20:4	METHYL ARACHIDONATE		5.0	4.0	4.0	3.0	2.0	1.0
C20:3	METHYL 11-14-17-EICOSATRIENOATE		5.0	—	—	1.0	1.0	1.0
C20:5	METHYL EICOSAPENTAENOATE		—	—	—	10.0	7.0	19.0
C22:0	METHYL BEHENATE		5.0	4.0	4.0	1.0	1.0	—
C22:1	METHYL ERUCATE		5.0	2.0	2.0	3.0	2.0	1.0
C22:6	METHYL DOCOSAHEXAENOATE		5.0	4.0	4.0	12.0	28.0	13.0
C24:0	METHYL LIGNOCERATE		5.0	2.0	2.0	1.0	1.0	—
C24:1	METHYL NERVONATE		5.0	4.0	4.0	1.0	1.0	1.0
C14:0	METHYL MYRISTATE	GLC-69		2.0				
C16:0	METHYL PALMITATE			88.0				
C16:1	METHYL PALMITOLEATE			2.0				\$45.00
C18:1	METHYL OLEATE			2.0				
C18:2	METHYL LINOLEATE			6.0				
C16:0	METHYL PALMITATE	GLC-70		2.0				
C18:0	METHYL STEARATE			5.0				
C18:1	METHYL OLEATE			25.0				\$50.00
C18:2	METHYL LINOLEATE			63.0				
C18:3	METHYL ALPHA LINOLENATE			5.0				
C16:0	METHYL PALMITATE	GLC-71		2.0				
C18:0	METHYL STEARATE			1.0				
C18:1	METHYL OLEATE			85.0				\$45.00
C18:2	METHYL LINOLEATE			12.0				
C16:0	METHYL PALMITATE	GLC-72		6.0				
C18:0	METHYL STEARATE			4.0				
C18:1	METHYL OLEATE			18.7				\$50.00
C18:2	METHYL LINOLEATE			70.0				
C18:3	METHYL ALPHA LINOLENATE			0.3				

THIS IS
THE 68D
STD

GLC-68
\$65.00 EACH

column D

Lab name: SRI
 Client: Compact
 Client ID: N10415
 Analysis date: 01/05/1980 02:41:08 **11-1-2015**
 Method: FAMES
 Description: FID ch1
 Column: 30MXT-wax 1micron .53mm
 Carrier: H2@~~7psi~~ **12 PSI**
 Integration: Peak sens=80.0 Base sens= 1.0 Min area= 10.00 Standard= 1.000 Sample= 1.000 Tangents=off
 Data file: Compact42.chr ()
 Sample: 1ul 68D/100 in Heptane
 Comments: Air=4 FID base temp=240

①

Temperature program:

Init temp	Hold	Ramp	Final temp
50.00	0.000	20.000	150.00
150.00	0.000	5.000	220.00
220.00	12.000	0.000	220.00

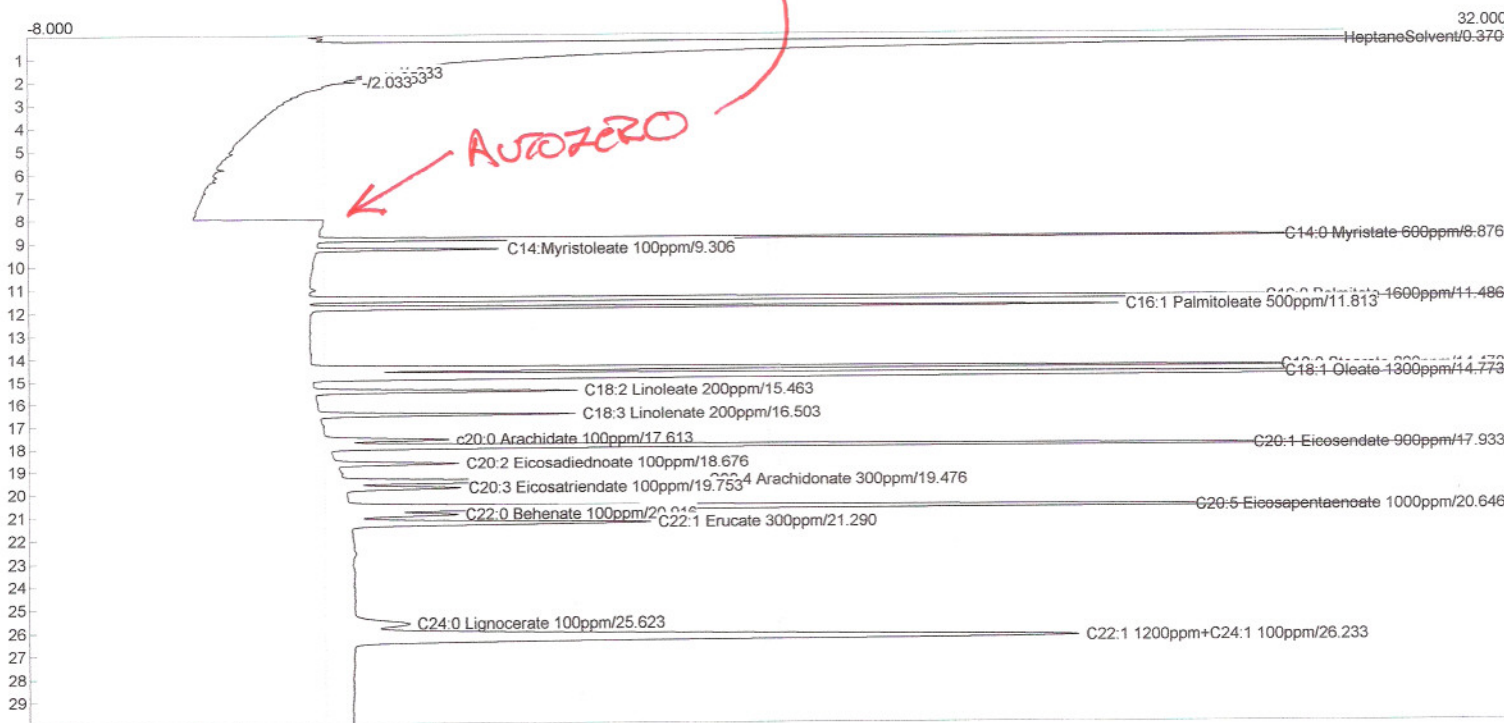
} TEMPERATURE PROGRAM

Events:

Time	Event
0.000	ZERO
8.000	ZERO
8.050	INTEG IMMEDIATE

← AUTOZERO

AUTOZERO



Component	Retention	Area
HeptaneSolvent	0.370	20394.3727
C14:0 Myristate 600ppm	8.876	162.9250
C14:Myristoleate 100ppm	9.306	25.4272
C16:0 Palmitate 1600ppm	11.486	449.8889
C16:1 Palmitoleate 500ppm	11.813	137.8072
C18:0 Stearate 800ppm	14.470	231.4318
C18:1 Oleate 1300ppm	14.773	484.9828
C18:2 Linoleate 200ppm	15.463	54.0430
C18:3 Linolenate 200ppm	16.503	54.0853
c20:0 Arachidate 100ppm	17.613	28.9950
C20:1 Eicosenate 900ppm	17.933	262.1510
C20:2 Eicosadiednoate 100ppm	18.676	27.8690
C20:4 Arachidonate 300ppm	19.476	83.1950
C20:3 Eicosatriendate 100ppm	19.753	27.0577
C20:5 Eicosapentaenoate 1000ppm	20.646	279.6254
C22:0 Behenate 100ppm	20.916	29.1728
C22:1 Erucate 300ppm	21.290	87.7398
C24:0 Lignocerate 100ppm	25.623	29.1990
C22:1 1200ppm+C24:1 100ppm	26.233	357.0394

1ul 68D - Check 68D STD
 DILUTED ÷ 100 in Heptane

HYDROGEN CARRIER GAS
 @ 12 psi

Lab name: SRI
 Client: Compact
 Client ID: N10415
 Analysis date: 01/05/1980 02:41:08
 Method: FAMES
 Description: FID ch1
 Column: 30MXT-wax 1micron .53mm
 Carrier: H2@7psi **12PSI**
 Integration: Peak sens=80.0 Base sens= 1.0 Min area= 10.00 Standard= 1.000 Sample= 1.000 Tangents=off
 Data file: Compact42.chr ()
 Sample: 1ul 68D/100 in Heptane
 Comments: Air=4 FID base temp=240

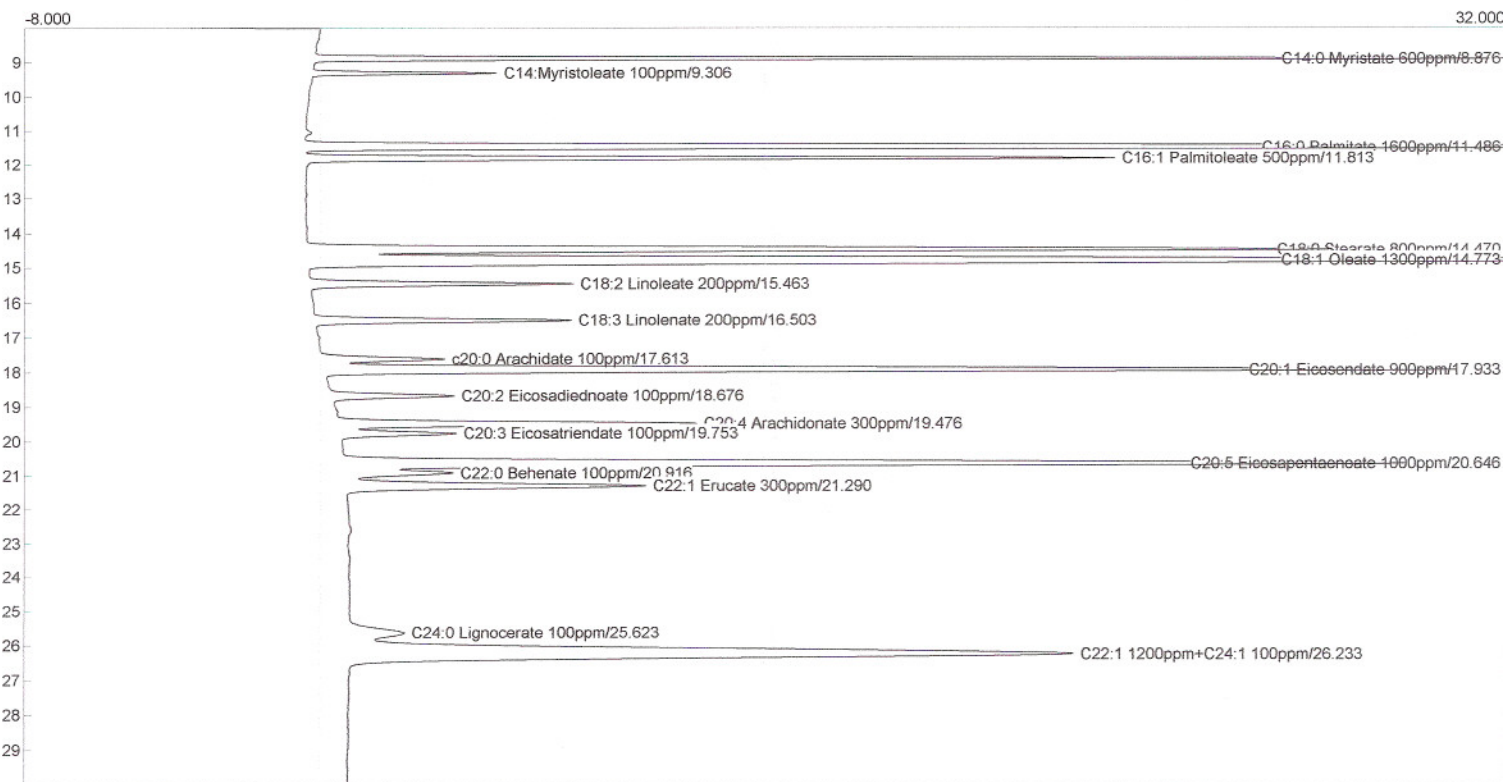
2

Temperature program:

Init temp	Hold	Ramp	Final temp
50.00	0.000	20.000	150.00
150.00	0.000	5.000	220.00
220.00	12.000	0.000	220.00

Events:

Time	Event
0.000	ZERO
8.000	ZERO
8.050	INTEG IMMEDIATE



Component	Retention	Area
HeptaneSolvent	0.370	20394.3727
C14:0 Myristate 600ppm	8.876	162.9250
C14:Myristoleate 100ppm	9.306	25.4272
C16:0 Palmitate 1600ppm	11.486	449.8889
C16:1 Palmitoleate 500ppm	11.813	137.8072
C18:0 Stearate 800ppm	14.470	231.4318
C18:1 Oleate 1300ppm	14.773	484.9828
C18:2 Linoleate 200ppm	15.463	54.0430
C18:3 Linolenate 200ppm	16.503	54.0853
c20:0 Arachidate 100ppm	17.613	28.9950
C20:1 Eicosendate 900ppm	17.933	262.1510
C20:2 Eicosadiednoate 100ppm	18.676	27.8690
C20:4 Arachidonate 300ppm	19.476	83.1950
C20:3 Eicosatriendate 100ppm	19.753	27.0577
C20:5 Eicosapentaenoate 1000ppm	20.646	279.6254
C22:0 Behenate 100ppm	20.916	29.1728
C22:1 Erucate 300ppm	21.290	87.7398
C24:0 Lignocerate 100ppm	25.623	29.1990
C22:1 1200ppm+C24:1 100ppm	26.233	357.0394

ZOOM IN ON FAME PEAKS
8-30 MINUTES

Lab name: SRI
 Client: Compact
 Client ID: N10415
 Analysis date: 01/05/1980 02:41:08
 Method: FAMES
 Description: FID ch1
 Column: 30MXT-wax 1micron .53mm
 Carrier: H2@7psi *12psi*
 Integration: Peak sens=80.0 Base sens= 1.0 Min area= 10.00 Standard= 1.000 Sample= 1.000 Tangents=off
 Data file: Compact42.chr ()
 Sample: 1ul 68D/100 in Heptane
 Comments: Air=4 FID base temp=240

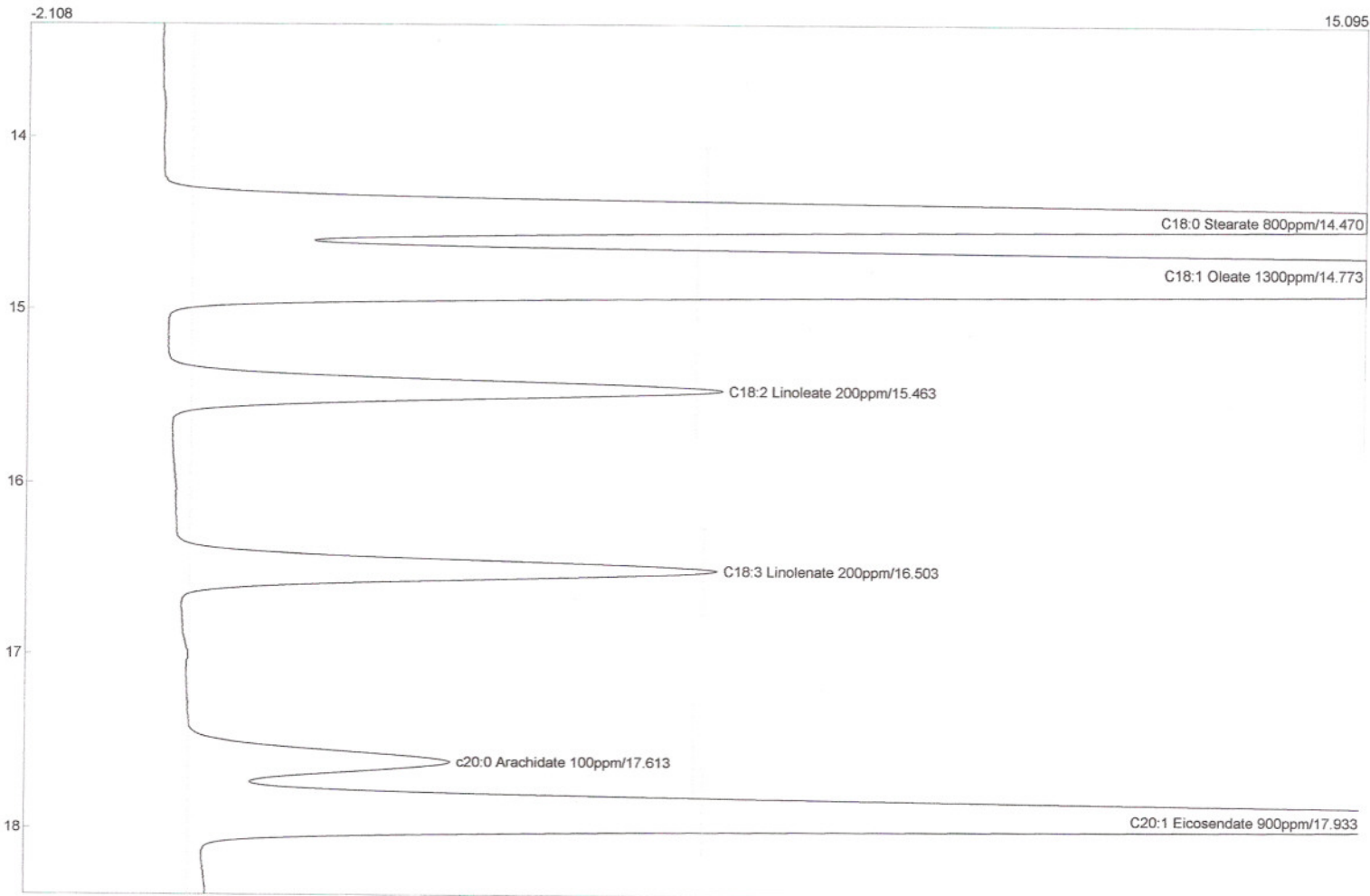
3

Temperature program:

Init temp	Hold	Ramp	Final temp
50.00	0.000	20.000	150.00
150.00	0.000	5.000	220.00
220.00	12.000	0.000	220.00

Events:

Time	Event
0.000	ZERO
8.000	ZERO
8.050	INTEG IMMEDIATE



Component	Retention	Area
HeptaneSolvent	0.370	20394.3727
C14:0 Myristate 600ppm	8.876	162.9250
C14:Myristoleate 100ppm	9.306	25.4272
C16:0 Palmitate 1600ppm	11.486	449.8889
C16:1 Palmitoleate 500ppm	11.813	137.8072
C18:0 Stearate 800ppm	14.470	231.4318
C18:1 Oleate 1300ppm	14.773	484.9828
C18:2 Linoleate 200ppm	15.463	54.0430
C18:3 Linolenate 200ppm	16.503	54.0853
c20:0 Arachidate 100ppm	17.613	28.9950
C20:1 Eicosendate 900ppm	17.933	262.1510
C20:2 Eicosadiednoate 100ppm	18.676	27.8690
C20:4 Arachidonate 300ppm	19.476	83.1950
C20:3 Eicosatriendate 100ppm	19.753	27.0577
C20:5 Eicosapentaenoate 1000ppm	20.646	279.6254

*C18 DETAIL
13 - 18 MINUTES*

Lab name: SRI Instruments

Client: Terje

Client ID: N9091

Analysis date: 06/18/2012 08:56:17

Method: Cobra 1ul

Description: FID

Column: Quadrex .25mm

Carrier: H2@5psi

Data file: Terje28.chr ()

Sample: 1ul 68D FAMES

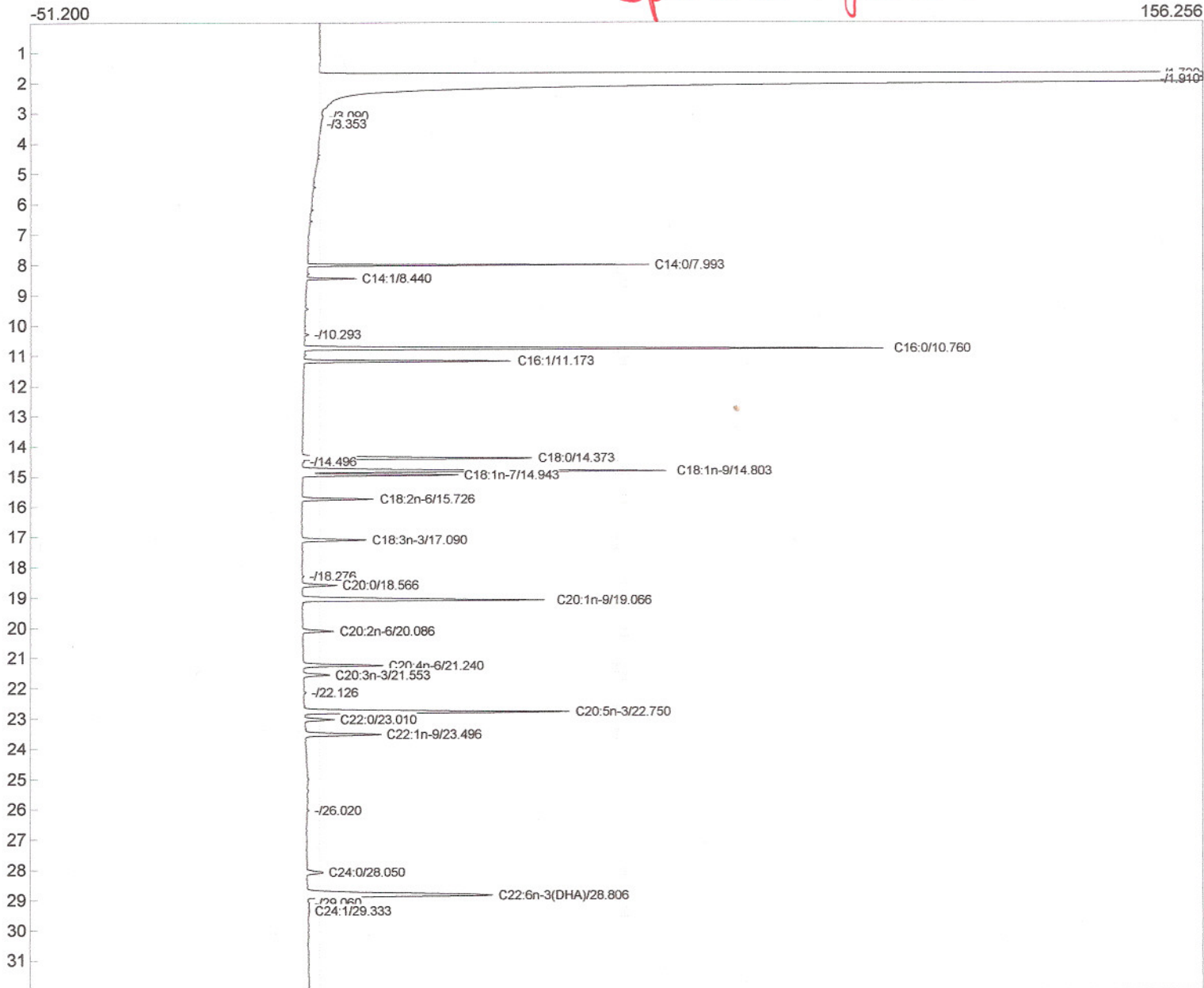
Temperature program:

Init temp	Hold	Ramp	Final temp
70.00	1.000	20.000	150.00
150.00	0.000	3.000	210.00
210.00	10.000	0.000	210.00
20.00	0.000	10.000	70.00

Events:

Time	Event
0.000	ZERO
0.010	H ON ()
1.000	A ON (StandardGason/off)
1.200	A OFF (StandardGason/off)
30.000	INTEG IMMEDIATE
39.900	H OFF ()

QUADREX 25 METER WAX
0.25 MM .25 MICRON
SP47LESS INJECTION



Lab name: SRI Instruments
 Client: Terje
 Client ID: N9091
 Analysis date: 06/21/2012 08:59:40
 Method: Cobra 1ul ON COLUMN
 Description: FID
 Column: Restek 30MXTwax 1mic ,53mm
 Carrier: H2@5psi
 Data file: Terje77.CHR ()
 Sample: 1ul 68D FAMES

Temperature program:

Init temp	Hold	Ramp	Final temp
70.00	1.000	20.000	150.00
150.00	0.000	2.000	210.00
210.00	10.000	0.000	210.00
20.00	0.000	10.000	70.00

Events:

Time	Event
0.000	ZERO
0.010	H ON ()
4.000	INTEG IMMEDIATE
31.000	INTEG IMMEDIATE
40.000	INTEG IMMEDIATE
49.900	H OFF ()

Restek 30meter 1X7-wax
 1 MICRON • 53MM
 ON-COLUMN INJECTION

