

Lab name: SRI Instruments
 Client: SRI R&D
 Client ID: N11573
 Analysis date: 09/26/2019 13:48:09
 Method: Heated inj=200C
 Description: FID 300C
 Column: 15MXT500 .25
 Carrier: H2 from BIHG
 Integration: Peak sens=95.0 Base sens=60.0 Min area= 10.00 Standard= 4.000 Sample=100.000 Tangents=off
 Data file: ETSU18.chr ()
 Sample: 333 calib

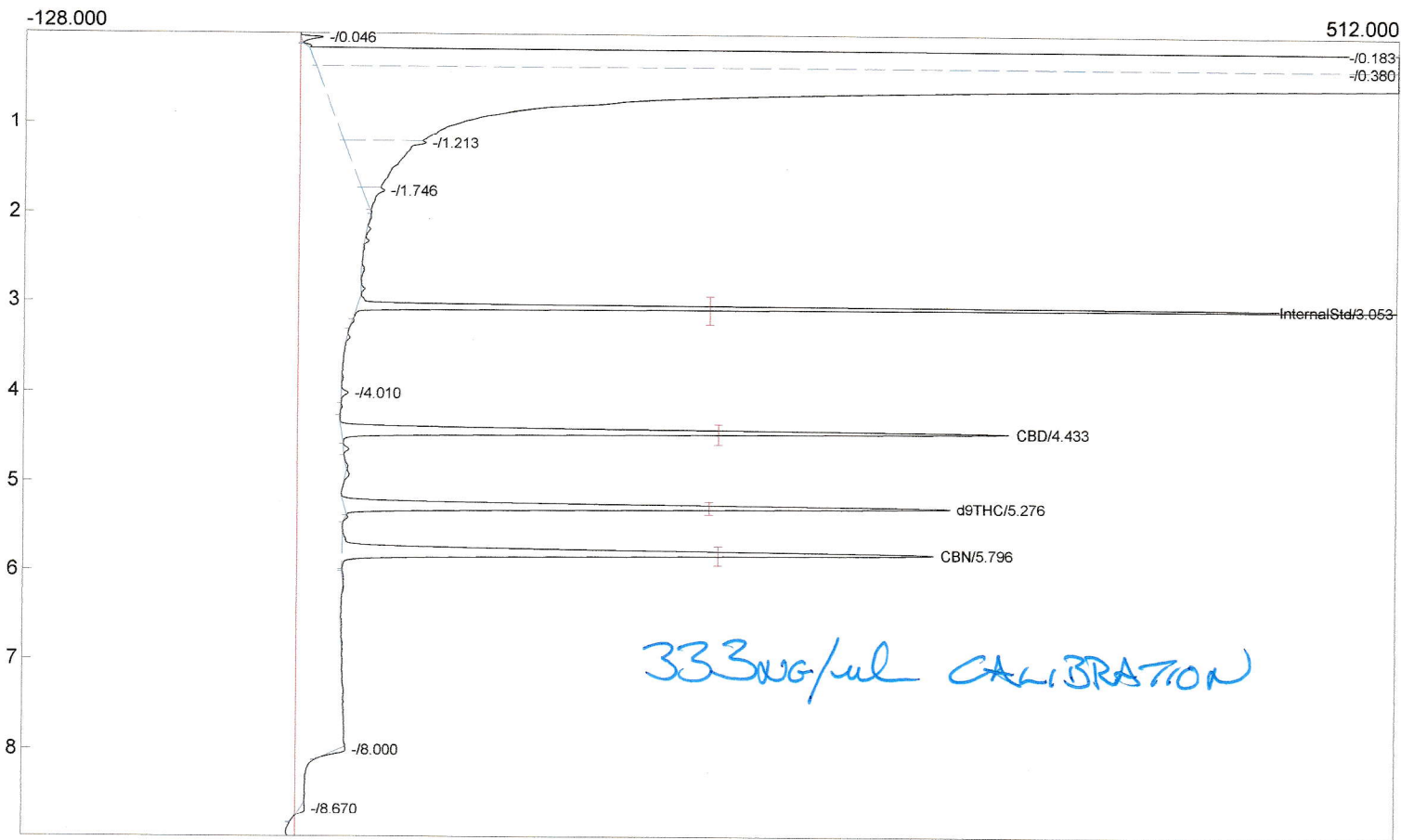


Temperature program:

Init temp	Hold	Ramp	Final temp
140.00	0.000	20.000	200.00
200.00	0.000	5.000	225.00
80.00	0.000	30.000	140.00

Events:

Time	Event
0.000	ZERO
2.000	INTEG IMMEDIATE



Component	Retention	Area	Internal	Units
InternalStd	3.053	1151.5068	100.0000	
CBD	4.433	1104.4324	13.3200	%
d9THC	5.276	1197.2064	13.3200	%
CBN	5.796	1302.9238	13.3200	%
		4756.0694	139.9600	

Lab name: SRI Instruments
 Client: SRI R&D
 Client ID: N11573
 Description: FID 300C
 Column: 15MXT500 .25
 Carrier: H2 from BIHG
 Temp. prog: C:\peak454Win10Cannabis\CannabisPotency.tem
 Components: C:\peak454Win10Cannabis\CannabinoidsbyIntStd.cpt
 Integration: Peak sens=95.0 Base sens=60.0 Min area= 10.00 Standard= 4.000 Sample=100.000 Tangents=off
 Data file: ETSU23.chr ()
 Sample: 333 deriv calibration

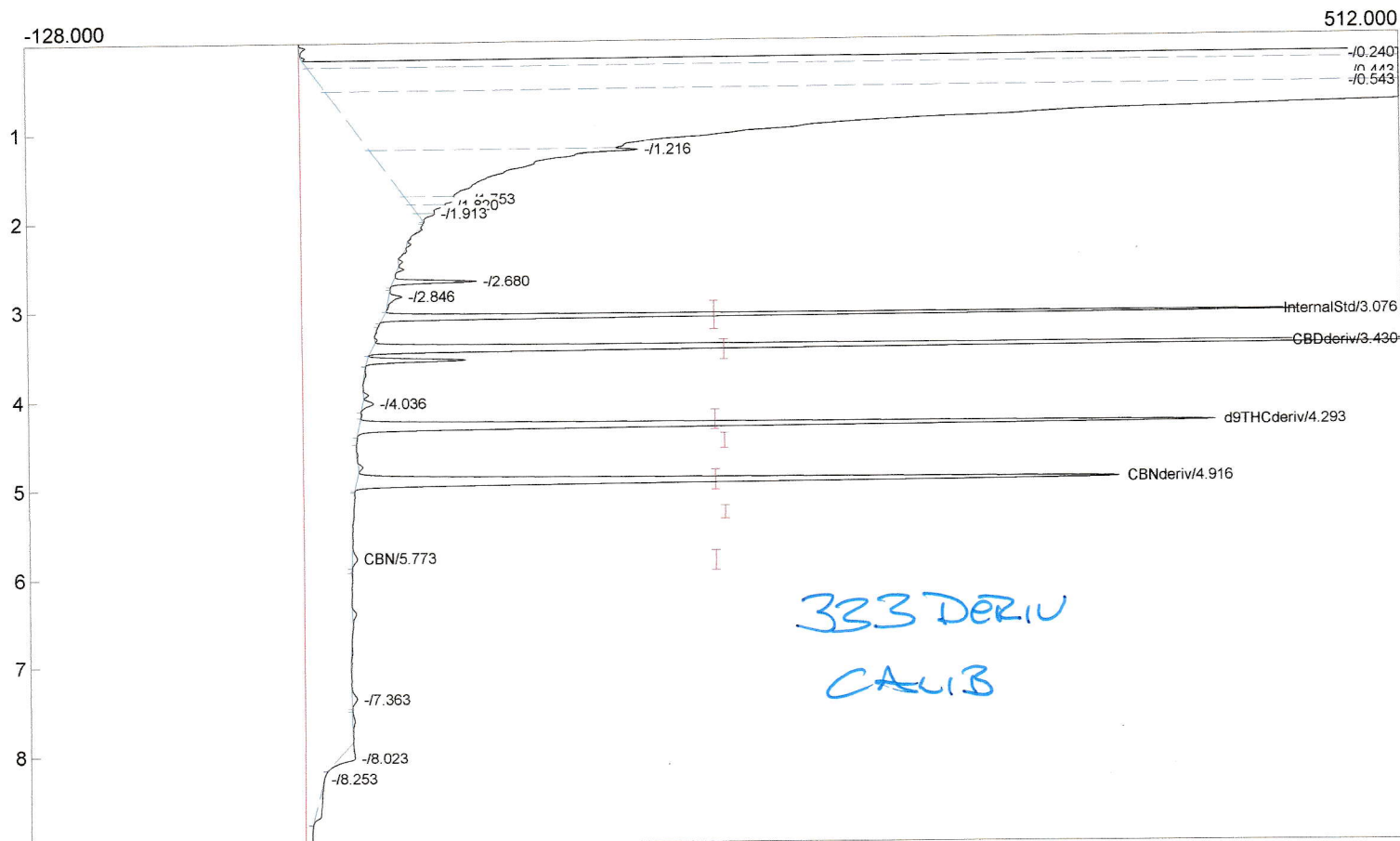
2

Temperature program:

Init temp	Hold	Ramp	Final temp
140.00	0.000	20.000	200.00
200.00	0.000	5.000	225.00
80.00	0.000	30.000	140.00

Events:

Time	Event
0.000	ZERO
2.000	INTEG IMMEDIATE
4.700	INTEG IMMEDIATE



Component	Retention	Area	Internal	Units
InternalStd	3.076	980.3013	100.0000	
CBDderiv	3.430	1681.8287	13.3200	%
d9THCderiv	4.293	1370.1552	13.3200	%
CBD	0.000	0.0000	0.0000	%
CBNderiv	4.916	1417.5222	13.3200	%
d9THC	0.000	0.0000	0.0000	%
CBN	5.773	14.3392	0.1722	%
		5464.1466	140.1322	

Lab name: SRI Instruments
 Client: SRI R&D
 Client ID: N11573
 Collected:
 Holding time:
 Description: FID 300C
 Column: 15MXT500 .25
 Carrier: H2 from BIHG
 Temp. prog: C:\peak454Win10Cannabis\CannabisPotency.tem
 Components: C:\peak454Win10Cannabis\CannabinoidsbyIntStd.cpt
 Integration: Peak sens=95.0 Base sens=60.0 Min area= 10.00 Standard= 4.000 Sample=194.000 Tangents=off
 Data file: ETSU20.chr ()

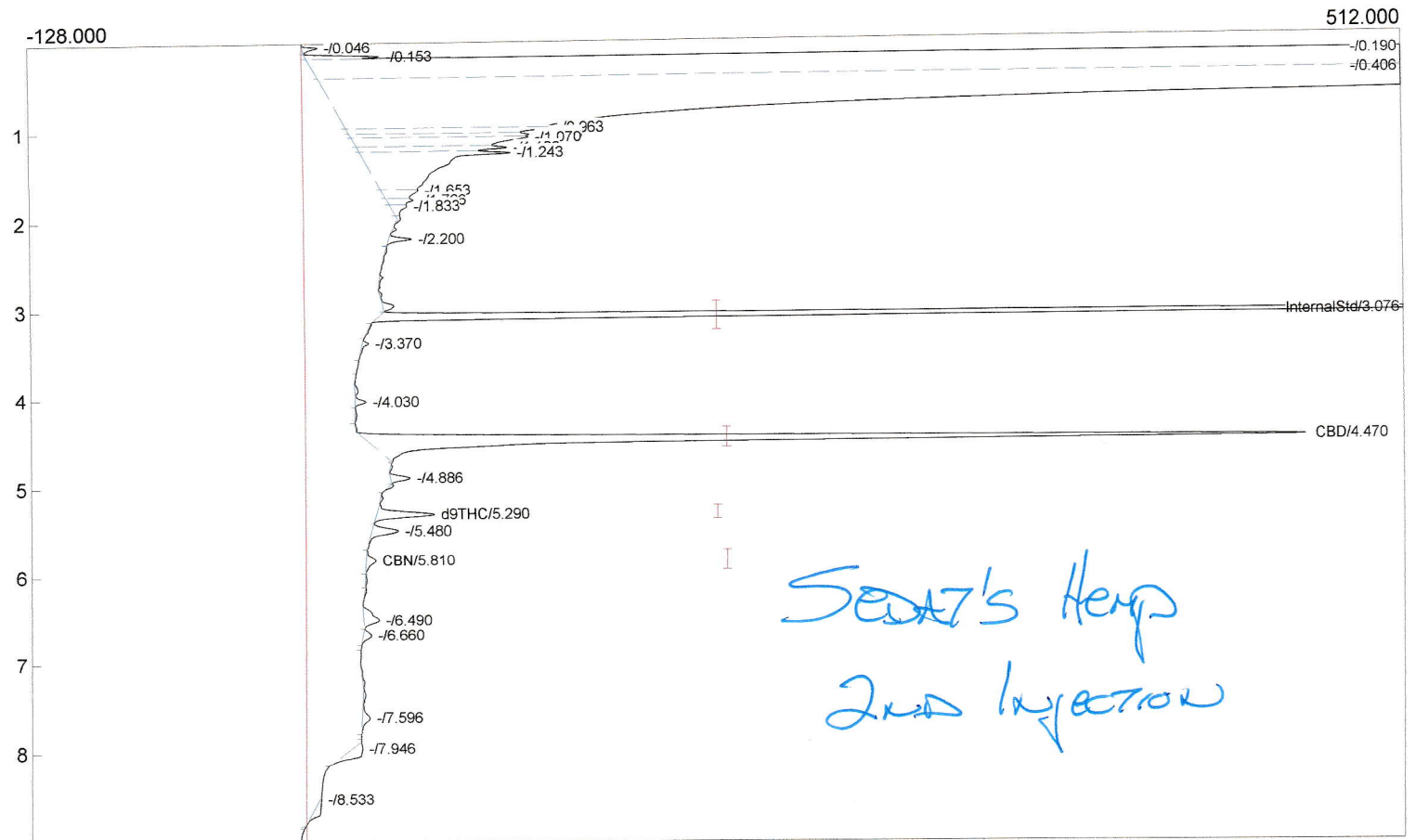
3

Temperature program:

Init temp	Hold	Ramp	Final temp
140.00	0.000	20.000	200.00
200.00	0.000	5.000	225.00
80.00	0.000	30.000	140.00

Events:

Time	Event
0.000	ZERO
2.000	INTEG IMMEDIATE
4.700	INTEG IMMEDIATE



Component	Retention	Area	Internal	Units
InternalStd	3.076	2274.8878	100.0000	
CBD	4.470	1882.9626	5.9253	%
d9THC	5.290	113.1122	0.3284	%
CBN	5.810	26.2823	0.0701	%
		4297.2449	106.3238	

Lab name: SRI Instruments

Client: SRI R&D

Client ID: N11573

Collected:

Holding time:

Description: FID 300C

Column: 15MXT500 .25

Carrier: H2 from BIHG

Temp. prog: C:\peak454Win10Cannabis\CannabisPotency.tem

Components: C:\peak454Win10Cannabis\CannabinoidsbyIntStd.cpt

Integration: Peak sens=95.0 Base sens=60.0 Min area= 10.00 Standard= 4.000 Sample=194.000 Tangents=off

Data file: ETSU19.chr ()

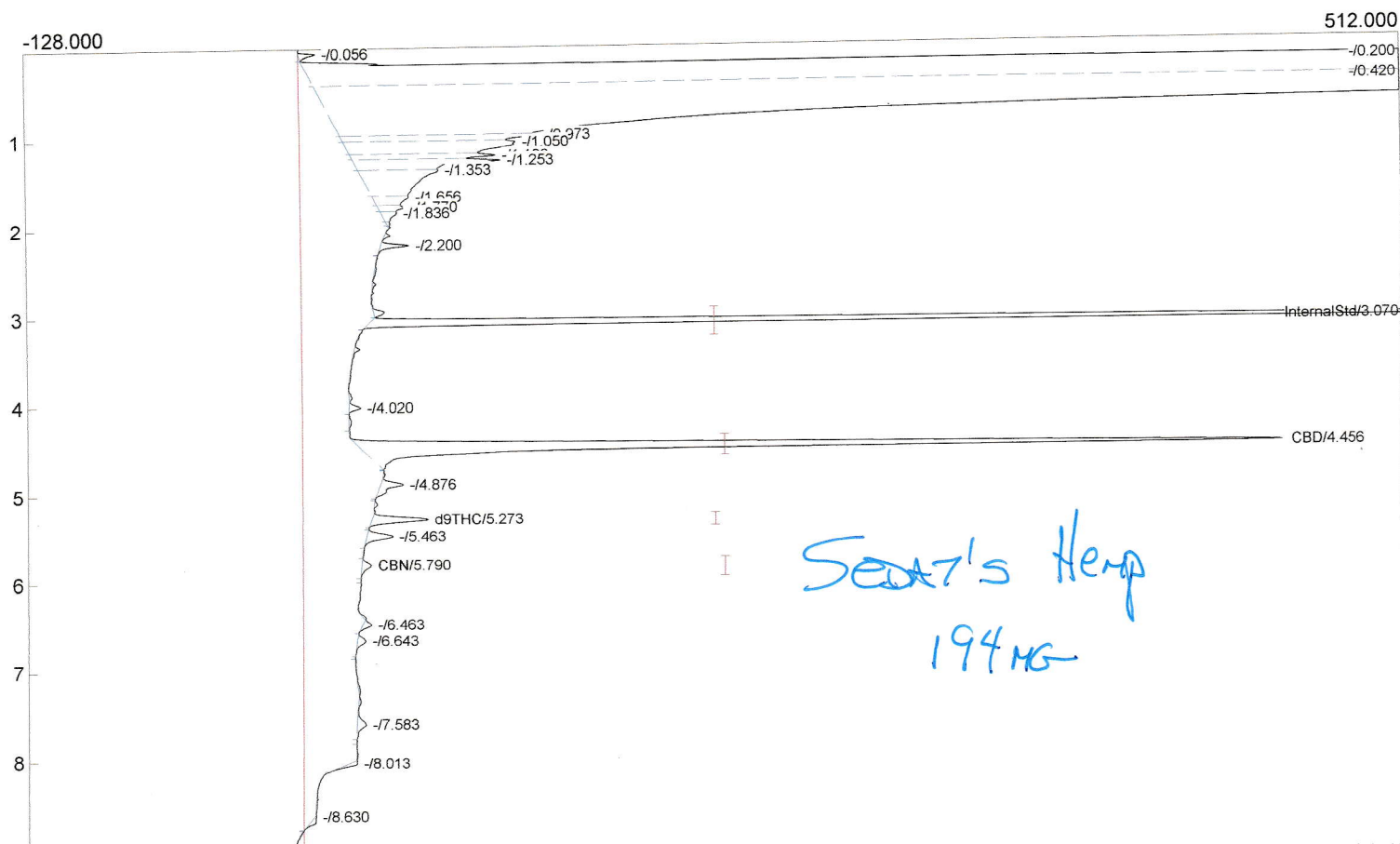
4

Temperature program:

Init temp	Hold	Ramp	Final temp
140.00	0.000	20.000	200.00
200.00	0.000	5.000	225.00
80.00	0.000	30.000	140.00

Events:

Time	Event
0.000	ZERO
2.000	INTEG IMMEDIATE
4.700	INTEG IMMEDIATE



Component	Retention	Area	Internal	Units
InternalStd	3.070	2271.0200	100.0000	
CBD	4.456	1816.8455	5.7270	%
d9THC	5.273	103.5374	0.3011	%
CBN	5.790	23.3614	0.0624	%
		4214.7643	106.0905	

Lab name: SRI Instruments

Client: SRI R&D

Client ID: N11573

Description: FID 300C

Column: 15MXT500 .25

Carrier: H2 from BIHG

Temp. prog: C:\peak454Win10Cannabis\CannabisPotency.tem

Components: C:\peak454Win10Cannabis\CannabinoidsbyIntStd.cpt

Integration: Peak sens=95.0 Base sens=60.0 Min area= 10.00 Standard= 4.000 Sample=194.000 Tangents=off

Data file: ETSU24.chr ()

Sample: Sedat's Hemp deriv 194mg

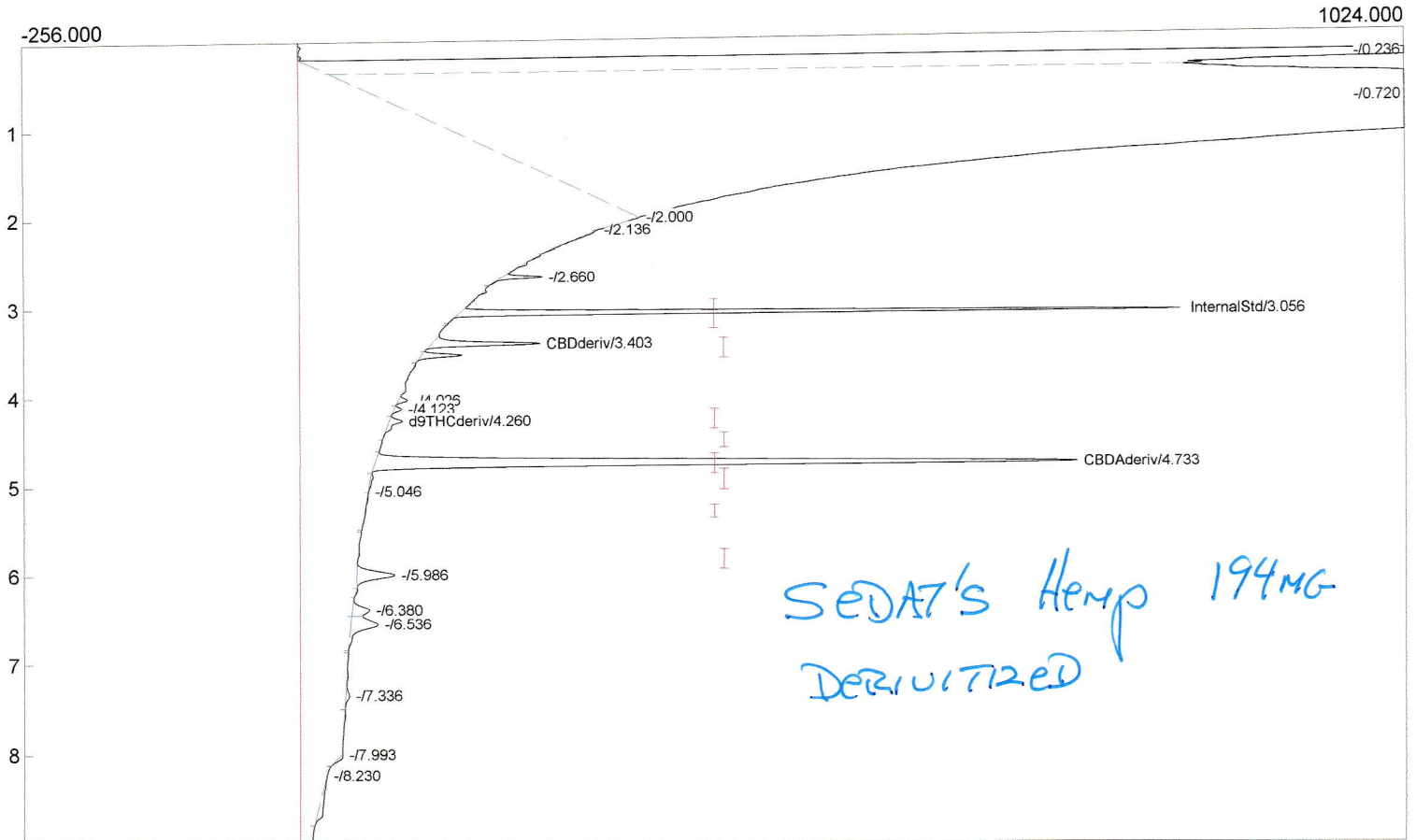
5

Temperature program:

Init temp	Hold	Ramp	Final temp
140.00	0.000	20.000	200.00
200.00	0.000	5.000	225.00
80.00	0.000	30.000	140.00

Events:

Time	Event
0.000	ZERO
2.000	INTEG IMMEDIATE
5.500	INTEG IMMEDIATE



Component	Retention	Area	Internal	Units
InternalStd	3.056	1521.6314	100.0000	
CBDderiv	3.403	288.8365	0.7597 %	
d9THCderiv	4.260	58.8064	0.1898 %	
CBD	0.000	0.0000	0.0000 %	
CBDAderv	4.733	2813.8692	7.4007 %	
d9THC	0.000	0.0000	0.0000 %	
CBN	0.000	0.0000	0.0000 %	
		4683.1435	108.3502	

TOTAL CBD
 $7.4007 \times .877 + .7597 = 7.250\%$
 $7.4007 \times .68 + .7597 = 5.792\%$