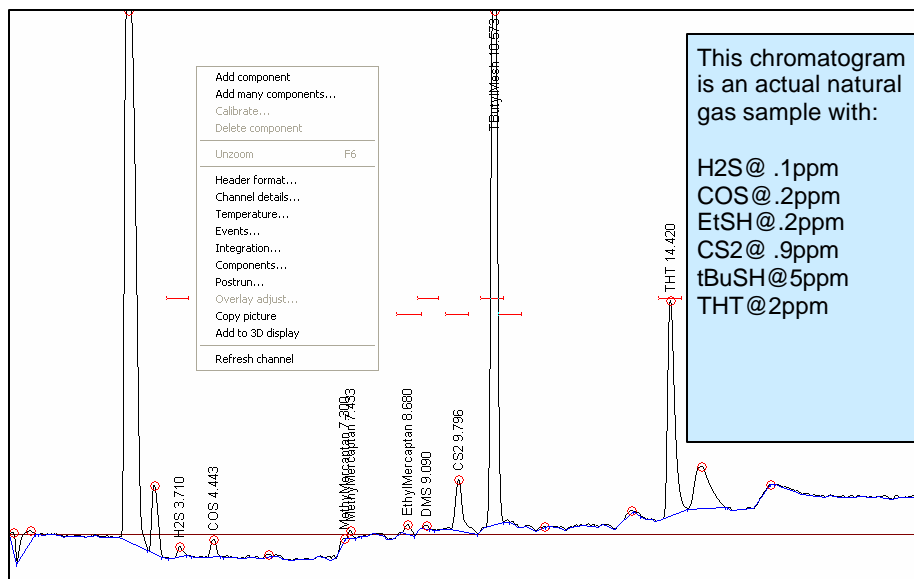
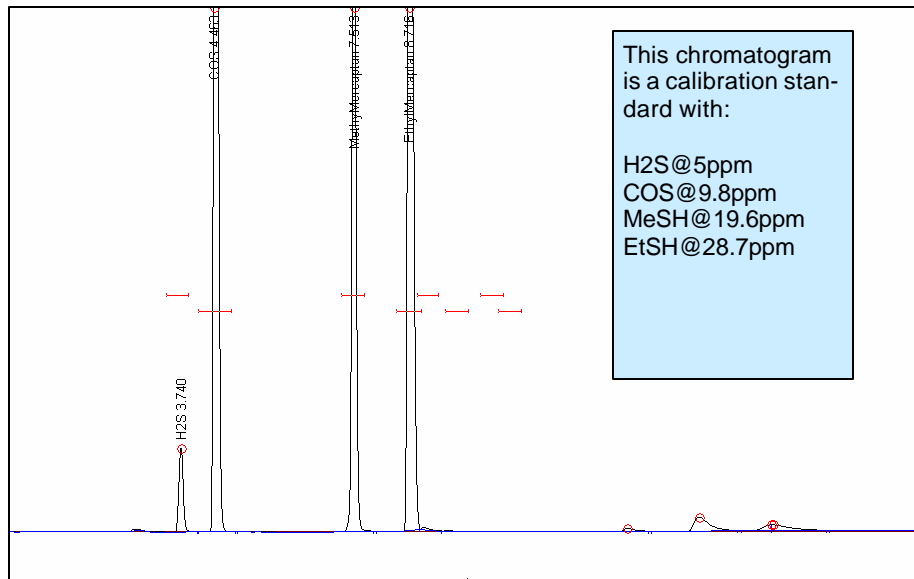


Sulfur in Natural Gas GC System

For the laboratory or field portable

The SRI **Sulfur in Natural Gas GC System** uses two columns, a 60 meter MXT 1 and a 15 meter Rt-Q Plot and a unique stop flow solenoid valve to chromatographically separate the sulfur peaks from hydrocarbon interferences.

An FPD/FID detector is used to simultaneously measure the Sulfur compounds and also the Hydrocarbons. The operator can easily verify that the hydrocarbons do not interfere with the sulfur peaks (a common problem with other similar systems)



8610-6555 Sulfur in Natural Gas GC System \$22,357.00
(2022 pricing, prices subject to change, consult most recent price list.)

Includes: SRI 8610C GC with 6 channel USB data system, PeakSimple software, FPD/FID detector, two capillary columns, stop flow valve, 10 port gas sampling valve, heated valve oven, and built-in air compressor

SRI Instruments, 20720 Earl St., Torrance CA 90503 USA
 310-214-5092, sales@srigc.com, www.srigc.com